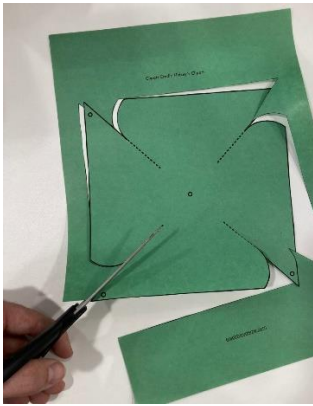


Paper Pinwheel

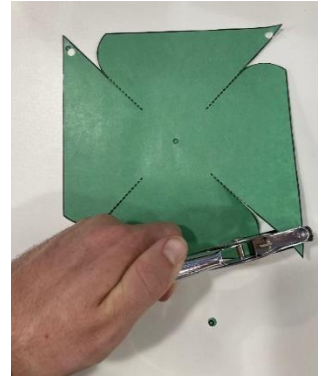
Materials

1. Pinwheel template x 1
2. Straw x 1
3. Split pin fastener (13mm or longer) x 1
4. Hole punch or sharp tool (round)
5. Scissors



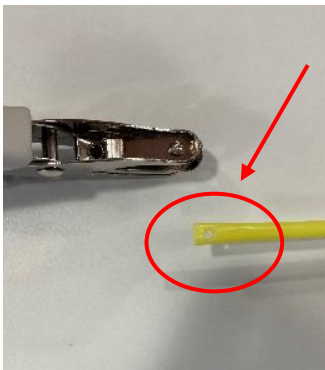
Step 1: Cut

Cut out the pinwheel template along the closed and dotted lines.



Step 2: Punch Holes

Use a hole-punch or sharp tool to make a hole in the centre and at the corners where indicated on the template.



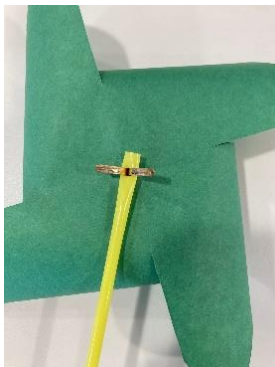
Step 3: Make a hole in straw

Use a hole-punch or sharp tool to make a hole through the straw.



Step 4: Combine and Fasten

Bring all 4 corners towards the middle of the pinwheel in line with the centre hole. Put a split pin fastener through all the holes.



Step 5: Attach Straw to Pinwheel

Attach a straw to the back of the pinwheel by threading the split pin through the hole in the straw and bending the pins to fasten.