

# Charles Heath Reserve Community & Place Space

## *Community Consultation Report – Stage 1: Masterplan & Vision*



## Overview

Charles Heath Reserve is a local park situated next to Five Dock Leisure Centre. Currently underutilised, Council originally secured funding to deliver covered outdoor multi-use playing courts that could be used for a number of recreation purposes such as netball and futsal. Since then, four indoor multipurpose courts have been incorporated into the design for the recreational facilities at Concord Oval (ROCO project), which is located approximately 650m to the west of CHR and funded through a separate PRUAIP stream.

## Background

Council previously had prepared by Clouston Associates a 'Concord Community and Recreation Precinct Strategy', to support Council in considering how it can meet the community, sporting and recreation need of the residents over the next 20 years. This strategy identified that active recreation services should be co-located at a redeveloped Concord Oval and that when opportunity arose at the Five Dock Leisure Centre site, the area should be converted to passive recreational facilities to cater for the increased population created by the new Kings Bay Precinct. This aligns with what we understand was the original recommendation by Urban Growth NSW in the early stages of the PRUAIP, for passive recreation within Charles Heath Reserve.

With the outcomes for increased community involvement in active recreational activities such as playing courts now being delivered within the ROCO project, the opportunity to deliver on outcomes for passive recreation for the population growth within this area can be realised within CHR. It is proposed to deliver a children's playground, outdoor exercise station, public domain works such as BBQ facilities and picnic seating, landscaping improvements and works to the existing adjacent council building (Five Dock Leisure Centre) to build a café and new amenities to support these passive recreational facilities. It is considered that these can be delivered within a budget of \$3.2M.

Architects dwp developed a masterplan for the space (pictured and in appendix) for the community to review.

## Community consultation

Council undertook a first round of consultation to seek feedback on the masterplan as well as invite the community to submit ideas for what they would find valuable and useful in the space.

The outcomes of this report will provide guidance for the concept designs. Once these are prepared, the community will be given another chance to provide feedback before the plans become realised in 2021.

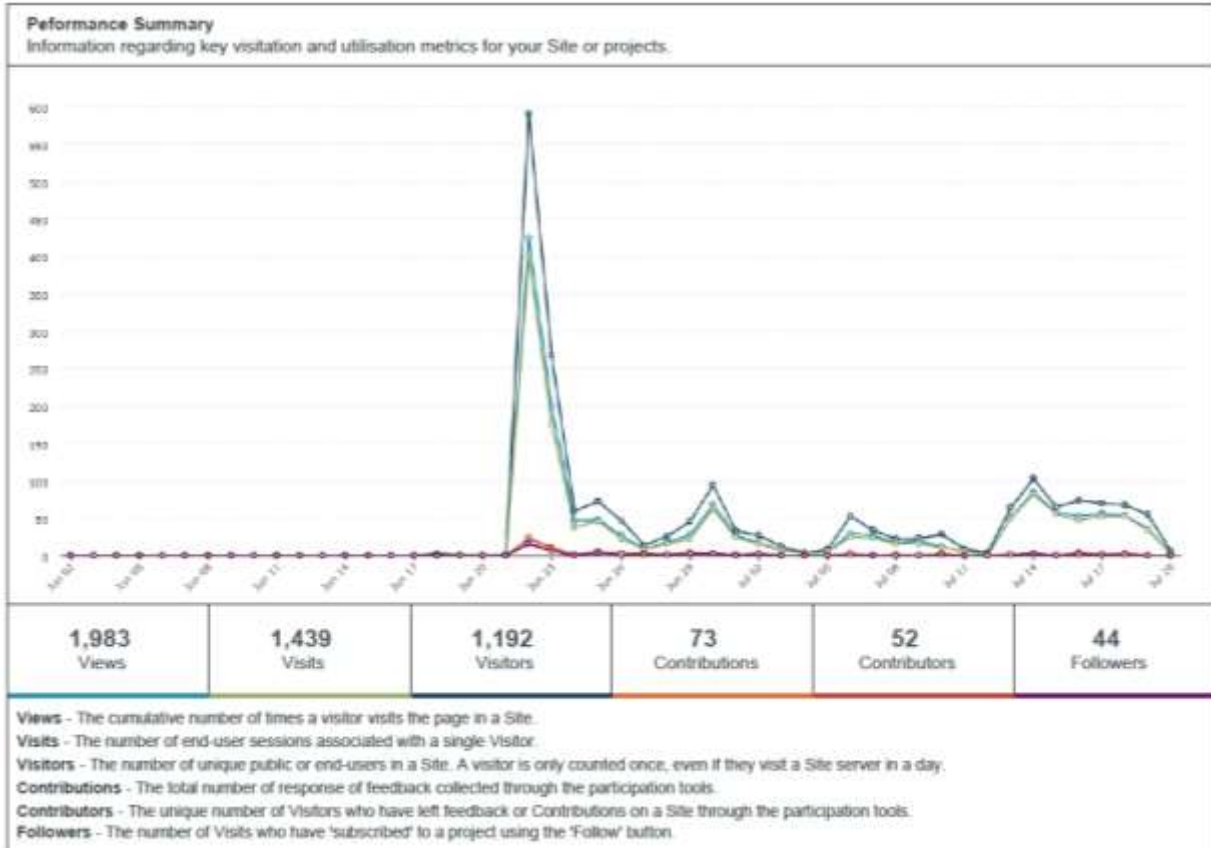
## Consultation methods


The community was engaged via the following methods:

- Feedback forms & virtual brainstorm on Collaborate Canada Bay
- Video walk through with project manager James Sullivan hosted on Collaborate Canada Bay
- Letterbox drop to 1600 surrounding residents
- Site signage at Charles Heath Reserve & inside Five Dock Leisure Centre
- Promotions via Council's social media channels including photoshoot with Mayor and project manager
- Email database send outs to local schools, preschools and day care centres
- Due to social distancing measures during the COVID-19 response, we are unable to host drop-in information sessions, however James Sullivan's contact was readily available to discuss any key questions with the community.

## Consultation outcomes

73 submissions across two participation tools – 28 survey submissions & 45 virtual brainstorm uploads.



Contributions by Activity			
The number and type of Contributions (response collected from your Visitors through each participation tool.)			
Activity	Contributions		%
Gather	45	<div><div></div></div>	61.6%
 Form (Beta)	28	<div><div></div></div>	38.4%

## Feedback on Masterplan

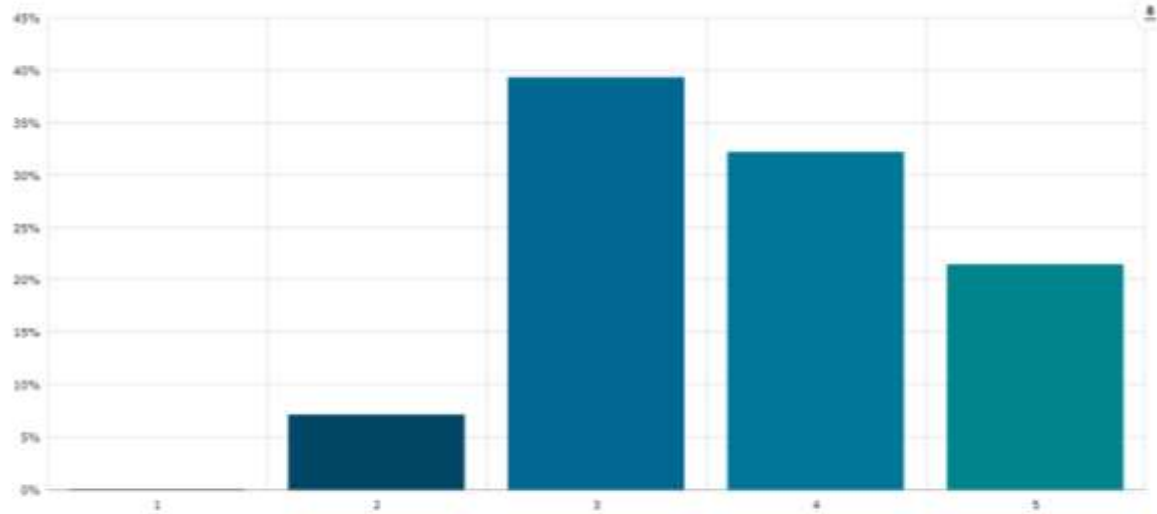
The average score given to the masterplan was 3.68/5, highlighting that some elements are lacking from the community's perspective.

2

What rating would you give the masterplan draft overall? Required

Rating (Skipped 0 (Answered 28 (100%))

Average 3.66



1	2	3	4	5	Count	Weighted average
0%	7.14%	39.29%	32.14%	21.43%	28	3.66
0	2	11	9	6		

## Positive feedback

“What do you like about the plans?”

A community facility that uses space currently underutilised. I like that the space is going to be put to good use without chopping down the trees.

At the moment it is not a well used space - the plan will make it more attractive and useful to the community

I like the preservation of open space in the middle of the reserve to allow children to run around in uncluttered space.

It's great that this space will attract families.

I like the BBQ's, playground, walkways and cafe.

The playground is away from the main road (queens rd).

It will tidy up the park.

## Constructive feedback & suggestions

“What suggestions do you have for the plans?”

## Summary

Numbers next to each theme represents the number of times this was suggested. Verbatim feedback can be viewed in the appendix.

- **Playground – 31**

Strathfield Park adventure playground appears to be very popular with the group and was referenced 6 times as a good example of what they would like to see in the space. A scooter or bike riding track was suggested 6 times, and nature and water play are also popular. A record of submissions to the virtual brainstorm can be found as an attachment to this report, where images were included with many submissions.

Scooters	Monkey bars	Strathfield Park	Water play	Shade sails	Flying fox	Nature play	Slides	Music	In-ground Trampoline
6	1	6	6	2	4	5	4	3	2

- **Access to the site – 21**

Pedestrian and cycling connection to the site could be greatly improved by adding access through to Coonardoo Close/Watts Reserve.

Nearby residents struggle to access Five Dock on foot/bike due to the golf course and are seeking solutions.

Participants brought up other accessibility and cycling/pedestrian issues related to the site and surrounding areas which can be read in the appendix.

An in-depth video submission from a resident can be found here: <https://youtu.be/Rn4iIRL-GN8>

Most of this feedback is relevant only to the Traffic and Transport team, however collaboration with their existing plans is essential.

- **Fitness Equipment – 20**

There were 9 requests for a scooter and/or running track around the open grassed area that would suit both young children and fitness users.

There was a mix of ideas for fitness equipment, with a soccer pitch (2), bouldering/rock climbing wall (2), outdoor basketball court (3), and chin-up station all suggested. 3 participants also requested a heated in-ground pool.

- **Parking – 12**

Participants expressed concern about limited additional parking provided. Could this be improved by clearer access from FDLC carpark?

- **Safety – 10**

Given the busy Queens Rd, 4 participants suggested gating or landscaping a barrier along the Queens Rd edge of the space.

Additionally, there were 4 requests to gate the children's playground. In Council's *Let's All Play Strategy*, principle 7 looks at boundaries, stating that full or part fencing may be appropriate or necessary for some playgrounds. In general, playgrounds should be considered for fencing if the playground is located close to a busy road and there is no fence around the reserve.

Alternatives to fencing that should also be considered include:

- Planting to create borders and boundaries
- Landscaped mounds and level changes
- Bollards.

In some instances, a boundary around the exterior of the entire reserve may offer a better outcome than caging the playground.

- **Intergenerational – 6**

Participants hope that teens and seniors will be considered when designing the space, with particular mention that Concord and Rosebank high schools use this space regularly. Fitness equipment, open space and public domain works should give distinct consideration to these groups who may not use the FDLC gym facilities and who cannot use the adventure playground.

- **Accessibility - 5**

Accessible tables for wheelchairs, accessible playground equipment, and accessible toilet facilities were all requested. Council's *Let's All Play Strategy* provides adopted design guidelines for all playgrounds and public domain that must be adhered to.

- **Kitchen garden – 5**

Participants support this idea, with several suggesting it be a community run garden.

- **Dog Off-Leash Area – 4**

Dog owners expect an area to be gated or assigned as off-leash in a certain area. However the November 2019 adopted Dogs in Public Places Strategy did not identify this Reserve as an appropriate off-leash dog area. With Cintra Park off-leash dog area a short walk away, this suggestion is not pertinent.

- **Aboriginal artwork – 3**

Participants suggested Aboriginal artwork be commissioned for the space, and incorporating bush tucker into the garden. Council's Place Management team would be able to provide assistance on public art in the space.

## Access & Inclusion Committee

Council's Access & Inclusion Committee Submitted requests for the following to be considered.

- Accessible street furniture
- Accessible BBQ facilities
- Accessible path of travel from the parking to the facilities
- A sensory garden for older people with dementia and children with disabilities
- Integrated accessible play equipment
- A fence near the road to stop children running towards the busy road
- Accessible signage
- Adequate lighting and TGSI's if ramps are installed
- An accessible but not automated toilet with a sink and path of travel from the play area and car parking area
- A shade structure
- A bike path on the outside of the park for integrated activities and older people.

## Virtual Brainstorm submissions

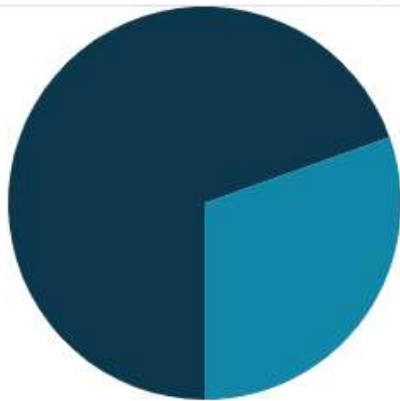
The brainstorm submissions can be viewed on Collaborate Canada Bay. All submissions have been incorporated into the above summary, however images accompany many of them.

<https://collaborate.canadabay.nsw.gov.au/chr/chr-charles-heath-reserve-virtual-brainstorm>

A PDF report of the submissions is also available as an attachment.

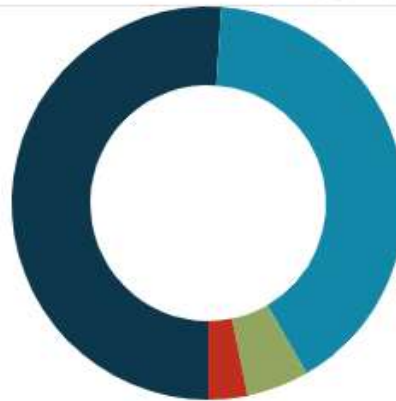
## Consultation Participants

Visitor Profile



● 1st Time ● Returning

Referral Types




● Social Media ● Direct  
● Websites ● Search Engine  
● Other



● Female ● Male ● Prefer not to say

88.1% of Members provided data (52 of 59)

Location	Postcode	Contributors	Contributions	% Member Contributions
Abbotsford	2046	34	47	 66.20%
Mortlake	2137	7	7	 9.86%
Concord West Dc	2138	4	6	 8.45%
Drummoyne	2047	2	5	 7.04%
Petersham North	2049	1	2	 2.82%
Huntingwood	2148	1	2	 2.82%
Unknown	Prufrock79	1	1	 1.41%

## Appendices

Verbatim Feedback

Promotional materials

Virtual Brainstorm Submissions