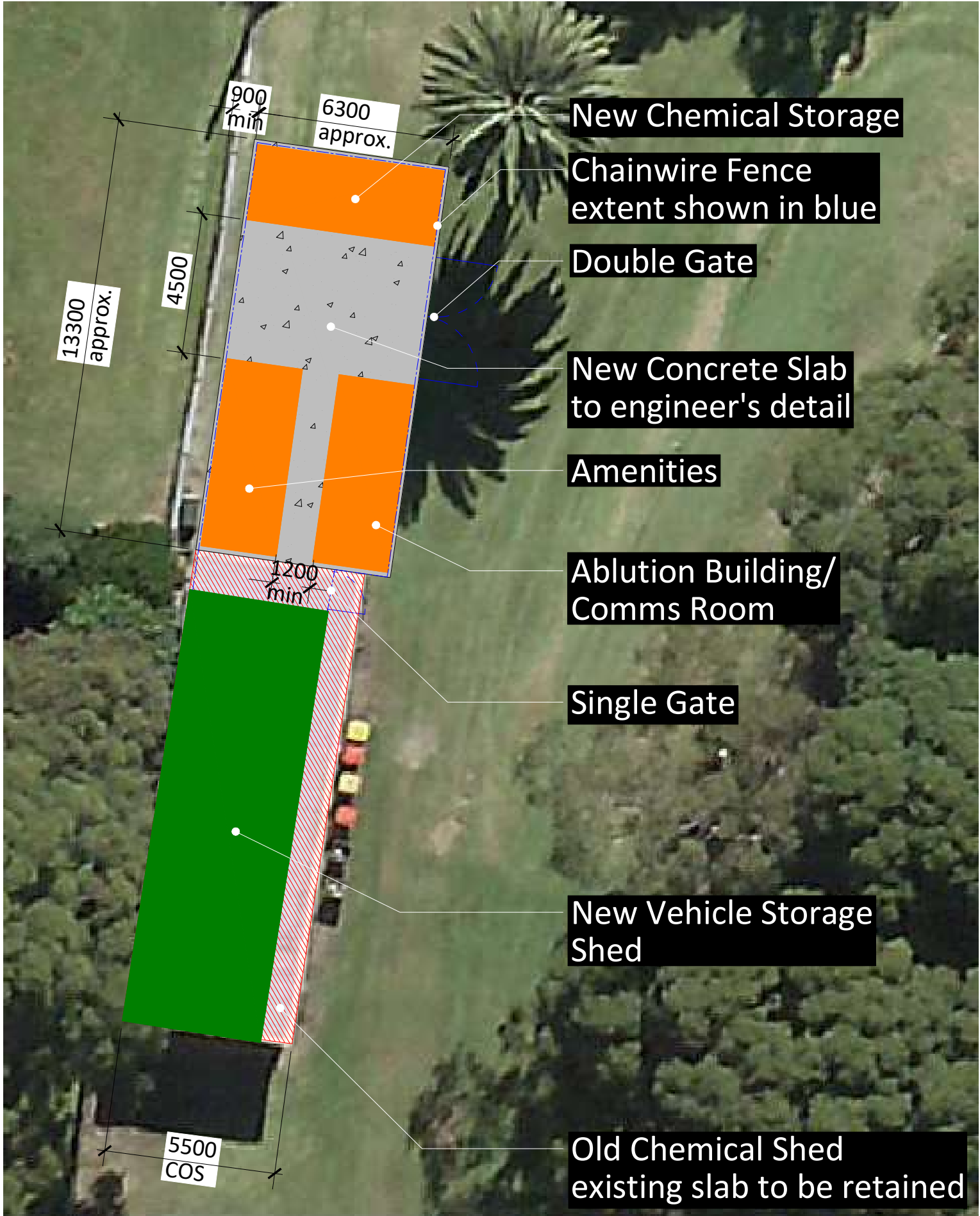




Contextual Site Plan



Configuration Plan



notes

The contractor shall verify all dimensions and levels on the site.  
Written dimensions to take preference over scaled dimensions.  
Documents and design remain the copyright of the issuing organisation, and cannot be reproduced without written consent.

legend

revision history

A Charles Heath Tender Addendum & REF

12/01/2022

organisation



project

Charles Heath Reserve - Barnwell Park Maintenance Shed

location

Charles Heath Reserve / Barnwell Park Golf, Five Dock

drawing title

Concept Design

issue

12/01/2022

drawn

JG

checked

--

approved

--

drawing no.

1/2

revision

A

scale

NTS

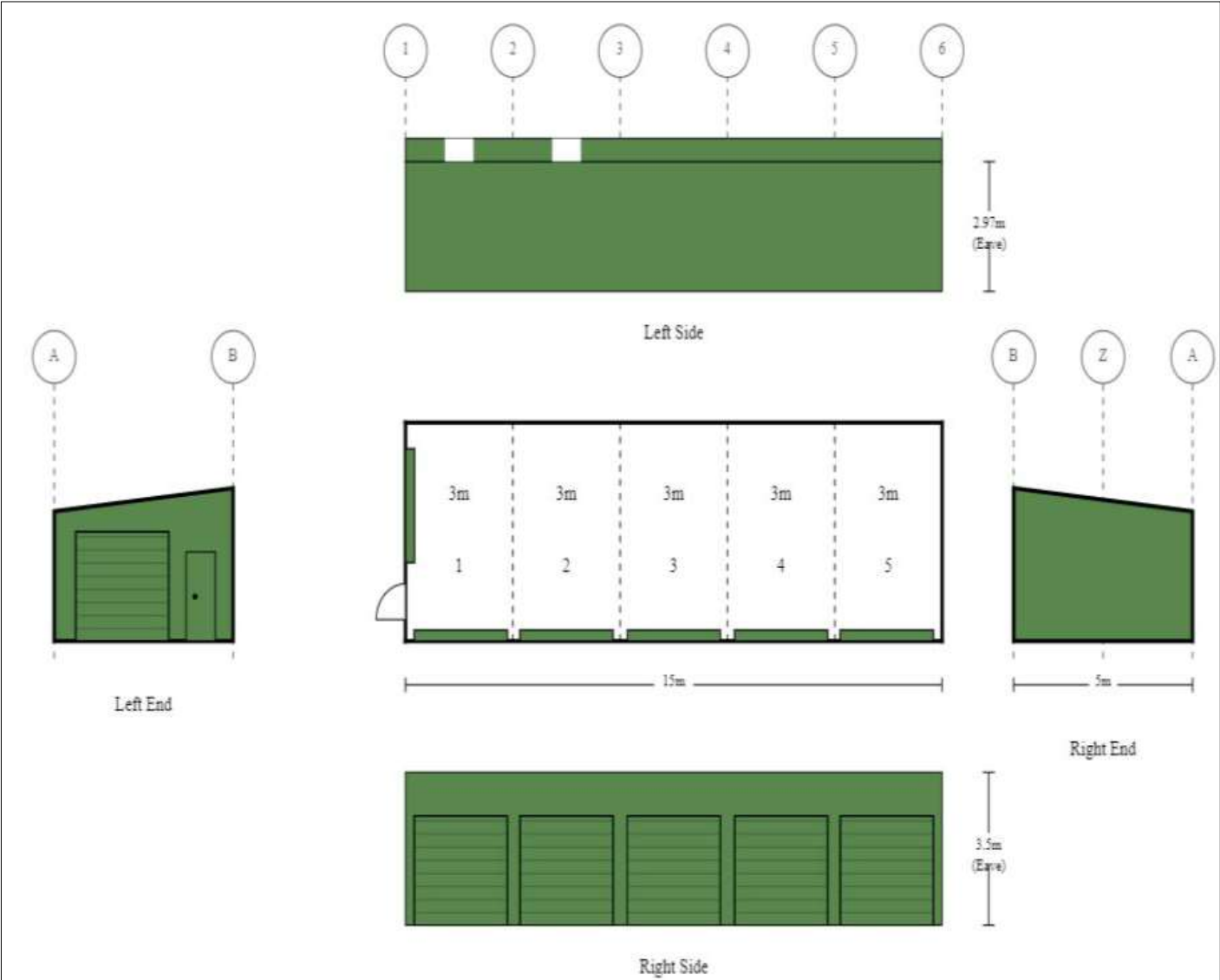


Scope of Delivery

- # Old Chemical Shed Structure
- o Remove existing chemicals/green keeping material and store in a safe temporary unit on site.
  - o Disconnect and cap existing services.
  - o Demolish and dispose of brickwork walls and roof
  - o Retain concrete slab.
  - o Clean and seal existing concrete slab
- # New Temporary Facility
- o Investigate latent site conditions (an occupational hygienist likely to be required)
  - o Procure structural engineering services to design the concrete slab details and piling, if required.
  - o Depending on the site conditions, the SSL may need to be elevated above NGL to avoid flooding.
  - o Note that this note slab will need to be level throughout, however, drainage systems will need t be designed to suit.
  - o Ensure all required cast in services are determined and executed.
  - o Supply and pour concrete slab to structural engineer's details.
  - o Seal concrete ensuring the appropriate slip rating is achieved.
- o Chemical Shed – Procure a 20ft shipping container equal or similar to the following specs from ‘Container Traders Pty Ltd’:
- 20' New Build (Single Trip) High Cube Shipping Container. Supply and install Roller Door. Supplied and Installed 2100mm x 2100mm
  - Roof Ventilation - Translucent Whirlybird installed. \*Please note whirlybird will be removed prior to transport.
  - Supply and install Steel vent. Dangerous Goods Vent supplied and installed 400mm x 240mm (adjacent to roller door
  - Standard-Mask Decals
- o Amenities Buildings – Procure a 20ft shipping container equal or similar to the following specs from ‘Container Traders Pty Ltd’:
- Multi-purpose Container Rooms - 20 ft range - Unit 6. Inclusions as per the brochure.
  - Window Security-Security Bars only-Security Grills 900mm x 1200mm
  - R10 Vinyl Flooring
  - Kitchenette - Add on overhead cupboards. - Standard-Masks Decals
- o Ablution & Comms Facility – Procure a 20ft shipping container equal or similar to the following specs from ‘Container Traders Pty Ltd’:
- Multi-purpose Container Rooms - 20 ft range - Unit 10. Inclusions as per the brochure.
  - Personnel Access Door. 820mm W x 2040mm H Internal Access Door
  - Bathroom - Toilet, Shower, Floor Drain, Vinyl floor covering, Toilet roll holder, Small vanity, 50L HWS in container door cavity with door vent, Insulated dividing wall with PA Door, Oyster light and light switch, Exhaust fan, Mirror.
  - Window Security-Security Bars only-Security Grills 900mm x 1200mm
  - Standard-Masks Decals
- o Vehicle Storage Shed – Procure a demountable shed equal or similar to the following specs from ‘The Shed Company’:
- Span - 5 metres
  - Length - 15 metres (5 Bays of 3 metres each)
  - Height - 2.97 metres
  - Roof Type - Skillion, 06 degree pitch
  - Roof – COLORBOND® steel CORODEK® 0.42 BMT (0.47TCT) sheeting, BlueScope
  - Walls and Trim – COLORBOND® steel CORODEK® 0.42 BMT (0.47TCT) sheeting, BlueScope

- o Connect all required services to the new temporary facility, including relocation of existing serviced from the existing maintenance facility.

- # Commissioning & Handover
- o Ensure all components of the new facility are fully operational
  - o Prior to Commissioning, the Contractor must arrange a test run of the facility with the end user (Golf Course Maintenance Team).
  - o Prior to handover, the contractor must arrange a site inspection with the client (Buildings & Property) and the end users (Golf Course Maintenance Team) for sign off.
  - o Operation and Maintenance manuals must be submitted to the client (Buildings & Property) handover day.



Proposed Vehicle Storage Shed - By The Shed Company



Examples of shipping containers by Conainer Traders Pty Ltd



notes

The contractor shall verify all dimensions and levels on the site.

Written dimensions to take preference over scaled dimensions.

Documents and design remain the copyright of the issuing organisation, and cannot be reproduced without written consent.

legend

revision history

A Charles Heath Tender Addendum & REF

12/01/2022

organisation



project

Charles Heath Reserve - Barnwell Park  
Maintenance Shed

location

Charles Heath Reserve / Barnwell Park Golf, Five Dock

drawing title

Concept Design

issue

12/01/2022

drawn

JG

checked

--

approved

--

drawing no.

2/2

revision

A

scale

NTS